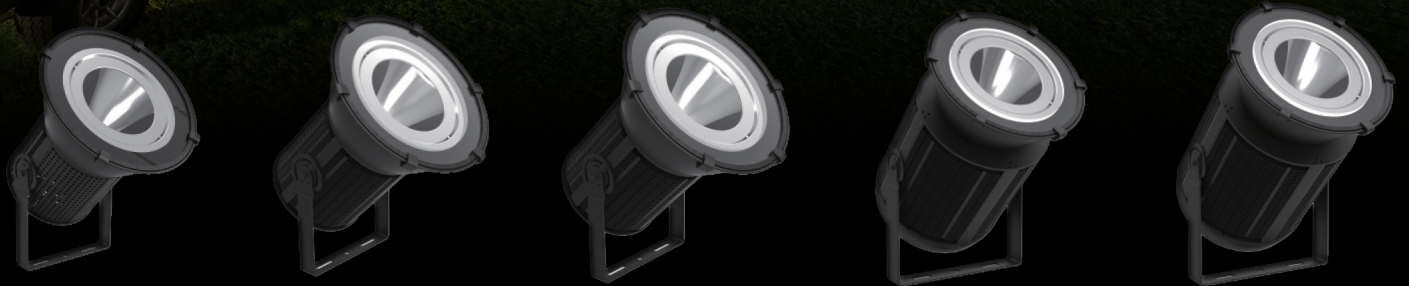




โคมไฟลานกว้าง สานบทักพท์

**S Series** 100w-500w (ขนาดกำลังไฟตั้งแต่ 100w ถึง 500w)

S Series High Pole Flood Light



IP67

CQC

RoHS

CE

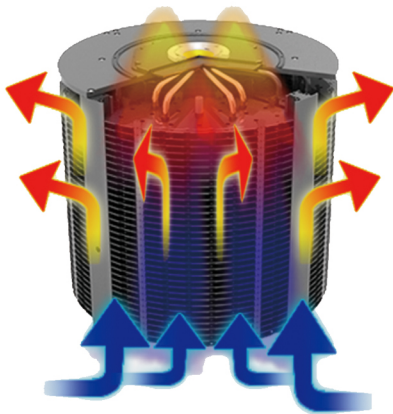
# S Series 100w-500w

S Series High Pole Flood Light



## Features:

1. Vapor Chamber base is flattened by CNC processing to contact the heat source perfectly, therefore it provides extremely fast heat transfer;
2. High quality aluminum provides durability; good anti-corrosion, anti-rust attributes for serious outdoor environment;
3. Built-in respirator to adjust temp difference to avoid from atomization;.
4. Strict shocking testing ensures safety in all situations;
5. Illumination angle adjustable, 250° adjustable;
6. IP67 protect on;
7. Light weight helps with installation;
8. Compatible with Multiple Reflection Cup.



## Three-dimensional Fin & Airflow Technology

Aesthetic heatsink module with layering design;  
 360 Three-Dimensional optimized thermal solution;  
 Ventilation vents under the heatsink provide sufficient air intake for cooling;  
 The heat is discharged along the pre-reserved 360 degree air duct;  
 Maximum contact between heatpipe and fin for maximum heat dissipation.

## S Series of Products with the Table (COB)

Product model	Power	Light source type	Voltage	Current	Chip model	Chip Qty	Way of series parallel	Aluminum plate size	With the Power Supply	With the light angle
S100	100	COB	37V	2500	048-1212C4	144	12S12P	28*28*0.9mm	XLG-100-H-A	6.5/15
S150	150	COB	55V	2450	048-1812C4	216	18S12P	28*28*0.9mm	XLG-150-H-A	6.5/15
S200	200	COB	55V	3000	048-1818C4	324	18S18P	28*28*0.9mm	XLG-200-H-A	6.5/15
S300	250W	COB	56V	4300	048-1818C4	324	18S18P	28*28*0.9mm	XLG-250-H-A	6.5/15
	300W		56V	5000	058-1825C4	450	18S25P	38*38*0.9mm	XLG-300-H-A	8/15
S400	400	COB	109V	3350	058-3618C4	648	36S18P	38*38*0.9mm	HLG-400H-C3500	8/15
S500	500	COB	110V	4200	550-3626C1	936	36S26P	38*38*0.9mm	ELG-240-C2100A*2	8/15